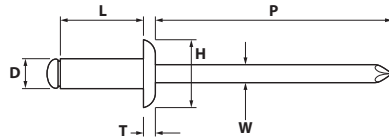


## REMACHE TUBULAR DIN 7337-A - ALUMINIO / ACERO

ALUMINIO / STEEL BLIND RIVET DIN 7337-A  
 RIVET TUBULAIRE DIN 7337-A EN ALUMINIUM / ACIER  
 BLINDNIETE DIN 7337-A AUS ALUMINIUM / STAHL



CAJA / BOX / BOÎTE	ALUMINIO / ALUMINIUM		ACERO / STEEL	
CÓDIGO	MEDIDA	RANGO AGARRE		
Code / Code	Measure / Mesure	Grip range / Gamme de prise		
	ØxL	G		
	m.m.	m.m.		
RESA2406	2,4x 6	0,5-3,0	500	10.000
RESA2408	2,4x 8	3,0-5,0	500	10.000
RESA3005	3,0x 5	0,5-2,0	500	10.000
RESA3006	3,0x 6	1,0-3,0	500	10.000
RESA3008	3,0x 8	3,0-5,0	500	10.000
RESA3010	3,0x10	5,0-7,0	500	10.000
RESA3012	3,0x12	7,0-9,0	500	10.000
RESA3206	3,2x 6	1,0-3,0	500	10.000
RESA3208	3,2x 8	3,0-5,0	500	10.000
RESA3210	3,2x10	5,0-7,0	500	10.000
RESA3212	3,2x12	7,0-9,0	500	10.000
RESA3215	3,2x15	10,0-12,0	500	10.000
RESA3218	3,2x18	13,0-15,0	500	10.000
RESA4006	4,0x 6	0,5-2,0	500	10.000
RESA4008	4,0x 8	2,0-4,0	500	10.000
RESA4010	4,0x10	4,0-6,0	500	10.000
RESA4012	4,0x12	6,0-8,0	500	10.000
RESA4014	4,0x14	8,0-10,0	500	10.000
RESA4016	4,0x16	10,0-12,0	500	10.000
RESA4018	4,0x18	12,0-14,0	500	10.000
RESA4020	4,0x20	14,0-16,0	500	10.000

CAJA / BOX / BOÎTE	ALUMINIO / ALUMINIUM		ACERO / STEEL	
CÓDIGO	MEDIDA	RANGO AGARRE		
Code / Code	Measure / Mesure	Grip range / Gamme de prise		
	ØxL	G		
	m.m.	m.m.		
RESA4806	4,8x 6	0,5-1,5	500	10.000
RESA4808	4,8x 8	1,5-3,5	500	10.000
RESA4810	4,8x10	3,5-5,5	500	10.000
RESA4812	4,8x12	5,5-7,5	500	10.000
RESA4814	4,8x14	7,5-9,5	500	5.000
RESA4816	4,8x16	9,5-11,5	500	5.000
RESA4818	4,8x18	12,0-14,0	500	5.000
RESA4821	4,8x21	14,5-16,5	500	5.000
RESA4824	4,8x24	17,5-19,5	250	5.000
RESA4830	4,8x30	20,5-25,5	250	2.500
RESA6008	6,0x8	0,5-2,0	500	2.500
RESA6010	6,0x10	2,0-4,0	500	2.500
RESA6012	6,0x12	3,0-6,0	250	2.500
RESA6016	6,0x16	6,0-10,0	250	2.500
RESA6018	6,0x18	10,0-12,0	250	2.500
RESA6020	6,0x20	12,0-14,0	250	2.500
RESA6025	6,0x25	17,0-19,0	250	2.500
RESA6412	6,4x12	3,0-6,0	250	2.500
RESA6415	6,4x15	8,0-10,0	250	2.500
RESA6418	6,4x18	10,0-12,0	250	2.500

AUTOSERVICIO	ALUMINIO / ALUMINIUM		ACERO / STEEL	
CÓDIGO	MEDIDA			
Code / Code	Measure / Mesure			
	ØxL			
	m.m.			
BFRESA3208	3,2x 8	200	12	
BFRESA3210	3,2x10	200	12	
BFRESA4008	4,0x 8	200	12	
BFRESA4010	4,0x10	200	12	
BFRESA4012	4,0x12	150	12	
BFRESA4016	4,0x16	150	12	
BFRESA4810	4,8x10	150	12	
BFRESA4812	4,8x12	100	12	
BFRESA4816	4,8x16	100	12	
BFRESA4821	4,8x21	75	12	
BFRESA4824	4,8x24	75	12	

BLISTER / BLISTER / BLISTER	ALUMINIO / ALUMINIUM		ACERO / STEEL	
CÓDIGO	MEDIDA			
Code / Code	Measure / Mesure			
	ØxL			
	m.m.			
BRESA3208	3,2x 8	15	20	
BRESA3210	3,2x10	15	20	
BRESA4008	4,0x 8	15	20	
BRESA4010	4,0x10	15	20	
BRESA4012	4,0x12	15	20	
BRESA4016	4,0x16	15	20	
BRESA4810	4,8x10	15	20	
BRESA4812	4,8x12	15	20	
BRESA4816	4,8x16	8	20	
BRESA4821	4,8x21	8	20	
BRESA4824	4,8x24	8	20	

PEDIDO MÍNIMO 1 EMBALAJE / MINIMUM ORDER 1 PACKAGING / COMMANDE MINIMALE 1 EMBALLAGE / MINDESTBESTELLMENGE 1 VERPACKUNG

### INFORMACIÓN TÉCNICA / TECHNICAL INFORMATION

Ø	D	H	T	P min.	W nom.	CIZALLA TÍPICA	TRACCIÓN TÍPICA	Ø AGUJERO
						Typical shear	Typical tensile	Hole Ø
						Cisaillement typique	Traction typique	Ø Foret
m.m.	m.m.	m.m.	m.m.	m.m.	m.m.	N	N	m.m.
2,4	2,30-2,48	4,3-5,0	0,5-0,8	27	1,40	300	350	2,5-2,6
3,0	2,90-3,08	5,8-6,5	0,8-1,2	27	1,75	480	550	3,1-3,2
3,2	3,05-3,28	5,8-6,5	0,8-1,2	27	1,75	535	650	3,3-3,4
4,0	3,85-4,08	7,0-8,0	0,9-1,5	27	2,08	850	1.020	4,1-4,2
4,8	4,65-4,88	8,5-9,5	1,0-1,6	27	2,58	1.160	1.420	4,9-5,0
6,0	5,85-6,08	10,5-12,0	1,1-1,9	30	3,30	1.830	2.140	6,1-6,2
6,4	6,25-6,48	11,5-13,0	1,4-2,2	30	3,80	2.050	2.500	6,5-6,6